

NOTE: PRODUCT MAY BE MARKED WITH ATEX OR IECEX

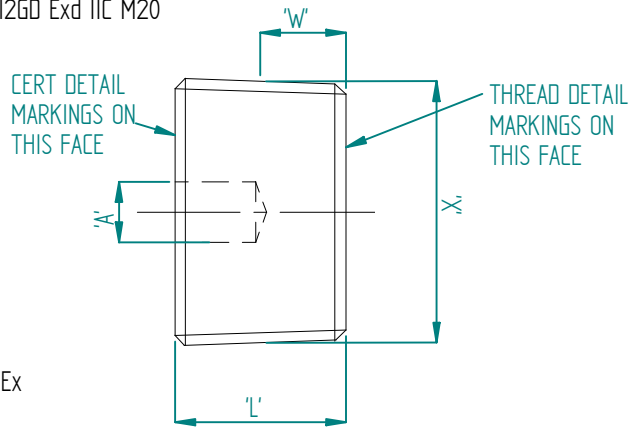
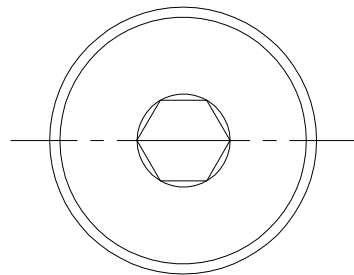
MARKING: ATEX

GROUP I - HAWKE 477/1 SIRAO6ATEX1240U IM2 EExd I M20

GROUP II - HAWKE 477/1 SIRAO6ATEX1240U II2GD EExd IIC M20
MARKING: IECEX

GROUP I - HAWKE 477/1 IECEX SIR.07.0036X IM2 Exd I M20

GROUP II - HAWKE 477/1 IECEX SIR.07.0036X II2GD Exd IIC M20



NOTE: PRODUCT MAY BE MARKED WITH ATEX OR IECEX

MARKING:

GROUP I - HAWKE 475/1 SIRAO6ATEX1240U IM2 EExd I M20

GROUP II - HAWKE 475/1 SIRAO6ATEX1240U II2GD EExd IIC M20
MARKING: IECEX

GROUP I - HAWKE 475/1 IECEX SIR.07.0036X IM2 Exd I M20

GROUP II - HAWKE 475/1 IECEX SIR.07.0036X II2GD Exd IIC M20

X	L	A	W	C	P	BOX QTY
	(-1.0) (+1.0)	(-0.0) (+0.3)	MIN	(-0.0) (+0.5)	(-0.0) (+0.5)	
M16	17	6	6	1.5	2	40
M20	17	10	6	1.5	2	40
M25	17	10	6	1.5	2	20
M32	17	10	6	1.5	2	20
M40	17	19	6	1.5	2	10
M50	17	19	6	1.5	2	10
M63	17	19	6	1.5	2	4
M75	17	19	6	1.5	2	4
M80	17	19	6	1.5	2	2
M90	17	19	6	1.5	2	2
M100	17	19	6	1.5	2	1
M110	17	19	6	1.5	2	1
M120	17	19	6	1.5	2	1

X	L	A	W	BOX QTY
AS REQUIRED BY STANDARD	MIN	(-0.0) (+0.3)	MIN	
3/8" NPT	10	6	4	40
1/2" NPT	13	10	4	40
3/4" NPT	13	10	4	20
1" NPT	17	10	4	10
1.1/4" NPT	17	19	4	10
1.1/2" NPT	17	19	4	10
2" NPT	17	19	4	4
2.1/2" NPT	22	19	4	4
3" NPT	22	19	4	4
3.1/2" NPT	25	19	4	2
4" NPT	25	19	4	1
5" NPT	27	19	4	1

A3 THIS IS A CAD DRAWING AND MUST BE EDITED AT SOURCE

OXFORD ST WEST ASHTON-U-LYNE OL7 0NA TEL: +44 (0)161 308 3611	ALL COPYRIGHT RESERVED - HAWKE INTERNATIONAL 2005. THIS DRAWING AND ALL COPYRIGHT THEREIN IS THE PROPERTY OF HAWKE INTERNATIONAL, A DIVISION OF HUBBELL LIMITED. (A member of the Hubbell Group of Companies).	3RD ANGLE PROJECTION				DRN DMJ CHD AJT	TITLE HAWKE - 477/1 - TAMPERPROOF PLUGS 475/1 - RX18 PLUGS	DRG. No. 475/1 477/1	SCALE NTS SHEET 1 OF 1
	(COPYRIGHT CONDITION: THIS DRAWING SHALL BE USED ONLY FOR THE PURPOSE FOR WHICH IT IS PROVIDED AND NO REPRODUCTION OR PUBLICATION OF THIS DRAWING MAY BE MADE AND NO ARTICLE MAY BE MANUFACTURED OR ASSEMBLED IN ACCORDANCE WITH THIS DRAWING WITHOUT THE PRIOR WRITTEN CONSENT OF THE OWNER.	DO NOT SCALE IF IN DOUBT ASK			DATE 03/04/07				
	REMOVE ALL BURRS AND SHARP EDGES USING MINIMUM CHAMFER OR RADIUS PARTICULARLY REMOVE ALL BURRS FROM START AND FINISH OF THREADS	GENERAL TOLERANCES LINEAR ± 0.15mm ANGULAR ± 0°30'	UNLESS OTHERWISE STATED	20/3/08 HCG08/ 006 B	HCG06/ XXX A	UNITS mm			
		FIRST ISSUE MODIFICATION	XX/XX/XX DATE/SIG DCN ISSUE						