

CAMERA AND VIDEO SYSTEMS



Product	Installation in Zone						Series	Page	WebCode
	0	1	2	20	21	22			
Analogue Colour Camera									
Analogue Dome Camera		•	•		•	•	EC-750	254	EC750AA
Analogue Pan-Tilt-Zoom Camera		•	•		•	•	EC-940-PTZ	251	EC940PTZAA
Analogue Zoom Camera		•	•		•	•	EC-940S-AFZ	247	EC940SAFZAA
Compact Camera		•	•		•	•	EC-710	237	EC710A
Analogue Thermal Imaging Camera									
Analogue Thermal Imaging Camera		•	•		•	•	EC-840S-TIC	258	EC840STICAA
Camera and Video Systems									
Camera Systems for all Areas								235	
Industrial Camera									
Full HD IP Industrial Camera							IC-930-AFZ	260	IC930AFZA
IP Colour Camera									
Full HD IP Pan-Tilt-Zoom Camera		•	•		•	•	EC-940-PTZ	249	EC940PTZIA
Full HD IP Zoom Camera		•	•		•	•	EC-940-AFZ	243	EC940AFZA
Full HD IP Zoom Camera		•	•		•	•	EC-940S-AFZ	245	EC940SAFZIA
Full HD IP Zoom Camera		•	•		•	•	EC-910-AFZ-10x	241	EC910AFZA
Full HD IP Zoom Camera		•	•		•	•	EC-910-AFZ-3x	239	EC910AFZA
IP Dome Camera		•	•		•	•	EC-750	253	EC750IA
IP Thermal Imaging Camera									
IP Thermal Imaging Camera		•	•		•	•	EC-840S-TIC	256	EC840STICIA
Video Software									
ISview Video Software								261	ISviewA
Video Software Qognify								262	CayugaA

For additional products and information please refer to r-stahl.com

Trust but verify

Increased safety

Camera systems play an increasingly important role for the safety onboard ships, drill rigs or in production plants - they are used to monitor work areas and processes and to ensure general safety. Our "automated surveillance", combining camera systems with powerful software, guarantees that every part of the plant, even the hazardous areas, can be monitored. Areas not easily accessible can be monitored by the smallest explosion proof camera in the world; video surveillance is a job for the state-of-the-art Dome camera, and we offer a great variety of PTZ cameras for zoom and pan/tilt functions. The cameras from R. STAHL HMI Systems GmbH enable security staff to react quickly to any potential safety problems and thus prevent emergencies. If an emergency occurs after all, the cameras provide a comprehensive overview of the situation, thus enabling staff to make the necessary decisions preventing the situation from escalating.

Greater efficiency

In their every-day work system operators profit from the advantages of a camera surveillance system. An improved overview of their workplace and its surroundings gives them control of the situation and enables them to work more efficiently and accurately. It is also possible to issue pro-active warnings to anyone entering hazardous areas.

Damage limitation

Despite everyone's best efforts it is not always possible to prevent accidents. Operating large machinery in tight spaces with many blind spots carries risks for life and machinery. A camera system from R. STAHL HMI Systems provides an extra pair of eyes - regardless of which machinery is used in which environment. Injuries or breakdowns can thus be prevented.

A10

Improved ergonomics and user-friendliness

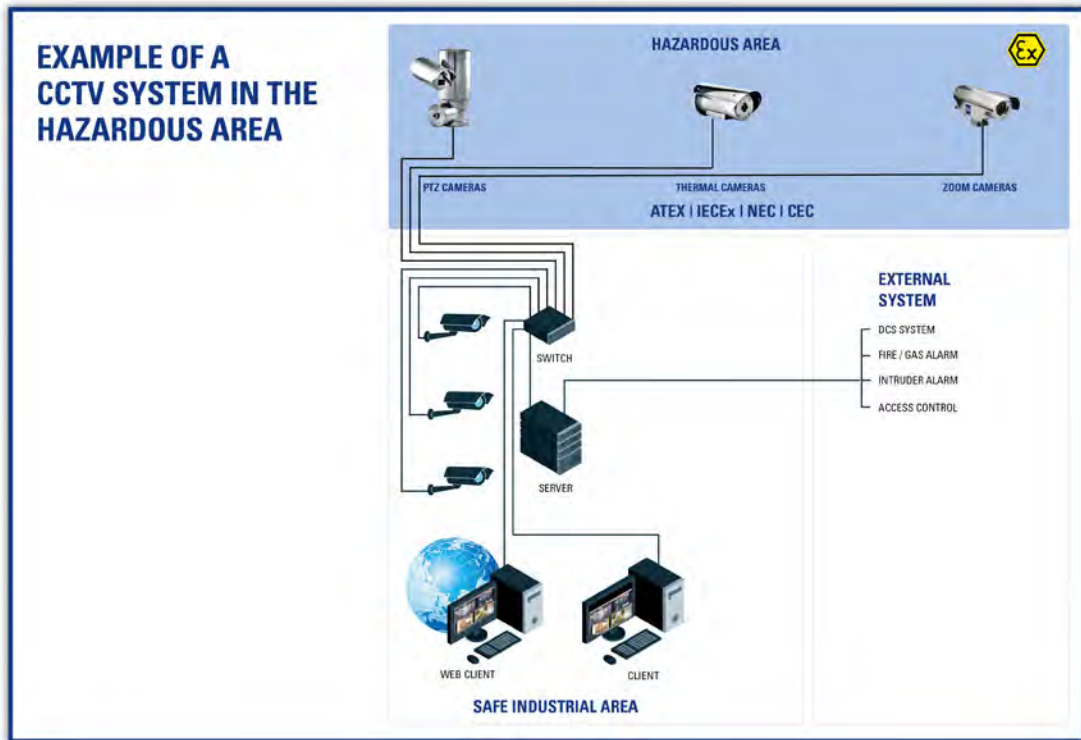
In most cases, cameras contribute towards improved ergonomics and user-friendliness. Fewer people need to be present in dangerous or hazardous areas. It is possible to distribute video images via a network, thus enabling several workers with different areas of responsibility to monitor the situation simultaneously and in real time. With the aid of visual feedback decisions can be made from remote positions.

From the Compact camera to the Dome camera**From the component to the complete system**

Various camera types and appropriate video systems ensure optimal monitoring of installation conditions in hazardous and non-hazardous areas, and thus the highest degree of system safety. The smallest explosion proof camera in the world monitors very narrow rooms; the dome camera has been developed for video surveillance, while our PTZ and zoom camera has additional vertical pan and zoom functions. The explosion-proof thermal image cameras by R. STAHL HMI Systems ensure optimum monitoring day and night, for example on oil-rigs. All cameras have been designed for hazardous areas and for installation in extreme ambient temperatures. Basically, there are two functional principles for camera systems that have decisive advantages depending on the existing application and requirements.



A10





- Analogue compact camera with fixed focus
- Certified acc. to ATEX, IECEx, NEC, CEC and EAC (TR) for almost worldwide operation in hazardous areas
- The world's smallest explosion proof camera: only 55 mm
- Extremely robust: seawater-proof and resistant to shock and vibration, degree of protection IP69K, suitable for extreme temperature ranges

WebCode **EC710A**



The analogue fixed camera EC-710 from R. STAHL is an uncomplicated surveillance camera for many types of application. Seven versions with different viewing angles are available. The stainless-steel camera enclosure (316L) has degree of protection IP69K and can be cleaned easily and quickly with a pressure washer. The camera is also resistant to shock and vibration and suitable for extreme temperatures ranging from -40 °C to +75 °C, making it ideal for surveillance systems in rough ambient conditions. The low power consumption saves energy, and since the camera is also low-maintenance, it is ideal for independent surveillance. Certified for installation in hazardous zones 1 / 2 / 21 / 22 according to ATEX, IECEx, NEC, CEC and EAC (TR), the camera can be installed world-wide.

A10

	ATEX / IECEx					
Zone	0	1	2	20	21	22
Installation in		•	•		•	•

	NEC 505 Class I			NEC 506		
Zone	0	1	2	20	21	22
Installation in		•	•		•	•

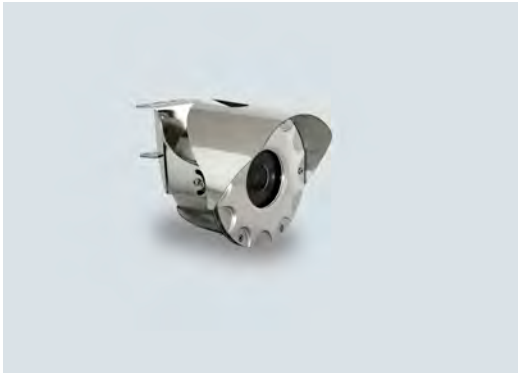
	NEC 500					
	Class I		Class II		Class III	
Division	1	2	1	2	1	2
Installation in		•	•	•	•	•

Selection Table						
Version	Fixed viewing angle					
Product Type	Viewing angle	TV system	Art. No.	PS	Weight kg	
EC-710-081P	81° fixed	PAL	202206▲	A1	0.700	
EC-710-070P	70° fixed	PAL	202207▲	A1	0.700	
EC-710-052P	52° fixed	PAL	212982▲	A1	0.700	
EC-710-044P	44° fixed	PAL	212981▲	A1	0.700	
EC-710-033P	33° fixed	PAL	202208▲	A1	0.700	
EC-710-023P	23° fixed	PAL	212980▲	A1	0.700	
EC-710-012P	12° fixed	PAL	212979▲	A1	0.700	

Accessories

Figure	Description	Art. No.	PS	Weight kg
Ex-e terminal box				
	JCT-8118-122-14p-02 - II 2 G Ex eb IIC T6/T5 Gb - II 2 D Ex tb IIC T80 °C ... T95 °C - 14 UT-2.5 terminals - 2 UT-2.5 PE terminals - 4 cable connectors - Degree of protection IP66, water-proof - Polyester resin, black	230600 ▲	A4	1.000
	JCT-8118-122-14p-02-ARM - ATEX-certification zone 1, 2, 21 & 22 - II 2 G Ex eb mb IIC T6/T5/T4 Gb - II 2 D Ex tb IIC T80 °C / T95 °C / T130 °C - Degree of protection IP66 - Polyester material, black - 14 UT-2.5 terminals - 2 UT-2.5 PE terminals - HxWxD: 115 x 115 x 64 mm	230603 ▲	A4	1.000
Camera multi-cable standard				
	VB-CAM-MULTI-11-JUNI 1 x coaxial cable 2 x power supplies 1 x data cable -40 °C ... +85 °C Suitable for EC-710 and EC-750 (analogue only) Price per metre	230585 ▲	A4	0.050
Camera multi-cable armoured				
	VB-CAM-MULTI-01-ARM 1 x coaxial cable 2 x power supplies 3 x data cables -40 °C ... +85 °C Mud and oil-resistant Suitable for EC-710 and EC-750 (analogue only) Price per meter	167535 ▲	A4	0.120
Inspection glass mount				
	Inspection glass holder for EC-710-Series For EC-710-0xx cameras Stainless steel 316 Mounting position can be ordered individually	230675	A4	1.900
Wall mount				
	Wall bracket for EC-710 Suitable for EC-710-0xx cameras V2A stainless steel Approx. 236 mm long Without camera	230669 ▲	A4	0.200
Video Encoder				
	VS-AXIS-Q7424-R-MKII - H.264 and MJPEG video compression - H.264 and MJPEG streams - Alarm input and output - Power over Ethernet - SFP Slot - Voltage 8 ... 28 V DC - Temp. -40 ... +75 °C	245722	A7	0.800

A10



- All-round Full HD zoom camera with 3x zoom
- PoE+, 24 VDC or 24 VAC
- Including wall / ceiling mount bracket
- Zone 1, 2, 21, 22
- Day / night, WDR, ONVIF S and Q
- Available without cable or with a 4 m or 10 m long armoured multi-cable

WebCode **EC910AFZA**



The EC-910-AFZ PoE+ camera combines state-of-the-art camera technology with Full HD resolution, WDR and zoom function for hazardous areas. The light-sensitive 3x zoom version features an extreme viewing angle of up to 90° (horizontal), making it ideal for monitoring rooms or inspection windows. To ensure guaranteed resistance to adverse weather, the EC-910-AFZ-I03 with 3x zoom has been tested and certified by Lloyd's Register for marine application. Lloyd's attests the camera's reliability with regard to temperature, corrosion and vibration resistance as well as EMC. Their design makes the cameras universally applicable in the oil and gas industries and in the chemical, pharmaceutical and related industries. The camera is certified acc. to ATEX, IECEx for Zone 1, 2, 21, 22. Additional certificates available are NEC C1 D2, CEC C1 Z1, EAC (TR). The stainless-steel sun-protection and the wall / ceiling mount bracket are part of the standard delivery.

A10





	ATEX / IECEx					
Zone	0	1	2	20	21	22
Installation in		•	•		•	•

	NEC 505 Class I			NEC 506		
Zone	0	1	2	20	21	22
Installation in		•			•	

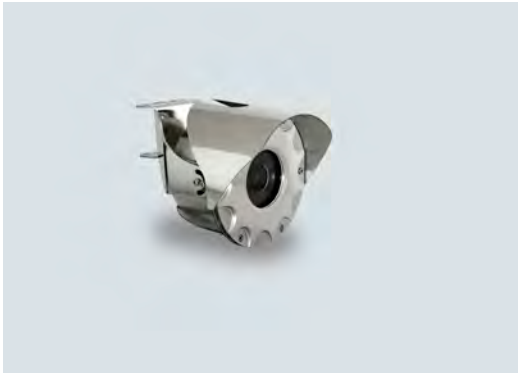
	NEC 500					
	Class I		Class II		Class III	
Division	1	2	1	2	1	2
Installation in		•		•		

Selection Table						
Focus	Automatic focus					
Zoom	3x optical					
Resolution	Full HD to 320x180p					
Viewing angle	90° (wide), 32° (tele.)					
Network protocol	ONVIF profile S and Q					
Product Type	Connection cable	Cable length	Certifications	Art. No.	PS	Weight kg
EC-910-AFZ-I03-P00	without cable	0 m	ATEX, IECEx, EAC, NEC, CEC	264963	A3	6.500
EC-910-AFZ-I03-P04	with cable	4 m	ATEX, IECEx, EAC	265897	A3	8.500
EC-910-AFZ-I03-P10	with cable	10 m	ATEX, IECEx, EAC	265898	A3	11.500

Accessories

Figure	Description	Art. No.	PS	Weight kg
Pole and Corner module EC-910				
	Pole and Corner module EC-910-AFZ Stainless steel 316L, electropolished Payload: 30 kg Pole diameter: 60 mm ... 200 mm Dimension: 120 x 86 mm	264965	A4	1.000
Ex e Terminal box				
	JCT-8146-Ethernet+Analog 5xcable glands Terminal box, polyester resin Version for ethernet or analog cameras 5 x cable glands: 2 x CMP-25SC2KVAR KLE MsNi M25x1.5 1 x 8161/7-M25-1707 with red stopping plug 2 x 8161/7-M20-1304 with red stopping plug usable for: EC-750, EC-910-AFZ, EC-940S-AFZ (ATEX, IECEx) EC-840S-TIC (ATEX, IECEx), EC-940-PTZ, Water tank	265668	A4	0.800
Camera multi-cable armoured				
	VB-CAM-MULTI-Ethernet-ARM 1 x Ethernet cable 3 x power supplies 2.5 mm ² 7 x data cable 0.34 mm ² -60 °C ... +80 °C 19.2 ±0.5 mm outer diameter IEC 60332-1 flame-resistant IEC 60754-2 halogen-free DIN 60811-404 oil-resistant NEK 606 mud-resistant Price per metre	252571 ▲	A4	0.472
Cable glands				
	CMP-20PX2K-REX-MsNi-NPT 1/2"OR-SET Cable gland with RapidEx compound explosion-protected for EC-910	275571	A4	0.425

A10



- All-round Full HD zoom camera with 10x zoom
- PoE+, 24 VDC or 24 VAC
- Including wall / ceiling mount bracket
- Zone 1, 2, 21, 22
- Day / night, WDR, ONVIF S and Q
- Available without cable or with a 4 m or 10 m long armoured multi-cable

WebCode **EC910AFZA**



The EC-910-AFZ PoE+ camera combines state-of-the-art camera technology with Full HD resolution, WDR, zoom and defog function for hazardous areas. The 10x zoom version provides sharp, crystal-clear images and is universally applicable in the oil and gas industries and in the chemical, pharmaceutical and related industries.

To ensure guaranteed resistance to adverse weather, the EC-910-AFZ-I10 with 10x zoom has been tested and certified by Lloyd's Register for marine application. Lloyd's attests the camera's reliability with regard to temperature, corrosion and vibration resistance as well as EMC.

The camera is certified acc. to ATEX, IECEx for Zone 1, 2, 21, 22. Additional certificates available are NEC C1 D2, CEC C1 Z1, EAC (TR). The stainless-steel sun-protection and the wall / ceiling mount bracket are part of the standard delivery.

A10





	ATEX / IECEx					
Zone	0	1	2	20	21	22
Installation in		•	•		•	•

	NEC 505 Class I			NEC 506		
Zone	0	1	2	20	21	22
Installation in		•			•	

	NEC 500					
	Class I		Class II		Class III	
Division	1	2	1	2	1	2
Installation in		•		•		

Selection Table						
Focus	Automatic focus					
Zoom	10x optical					
Resolution	Full HD to 320x180p					
Viewing angle	67° (wide), 7.6° (tele)					
Network protocol	ONVIF profile S and Q					
Product Type	Connection cable	Cable length	Certifications	Art. No.	PS	Weight kg
EC-910-AFZ-I10-P00	without cable	0 m	ATEX, IECEx, EAC, NEC, CEC	264964	A3	6.500
EC-910-AFZ-I10-P04	with cable	4 m	ATEX, IECEx, EAC	265900	A3	8.500
EC-910-AFZ-I10-P10	with cable	10 m	ATEX, IECEx, EAC	265921	A3	11.500

Accessories

Figure	Description	Art. No.	PS	Weight kg
Pole and Corner module EC-910				
	Pole and Corner module EC-910-AFZ Stainless steel 316L, electropolished Payload: 30 kg Pole diameter: 60 mm ... 200 mm Dimension: 120 x 86 mm	264965	A4	1.000
Ex e Terminal box				
	JCT-8146-Ethernet+Analog 5xcable glands Terminal box, polyester resin Version for ethernet or analog cameras 5 x cable glands: 2 x CMP-25SC2KVAR KLE MsNi M25x1.5 1 x 8161/7-M25-1707 with red stopping plug 2 x 8161/7-M20-1304 with red stopping plug usable for: EC-750, EC-910-AFZ, EC-940S-AFZ (ATEX, IECEx) EC-840S-TIC (ATEX, IECEx), EC-940-PTZ, Water tank	265668	A4	0.800
Camera multi-cable armoured				
	VB-CAM-MULTI-Ethernet-ARM 1 x Ethernet cable 3 x power supplies 2.5 mm ² 7 x data cable 0.34 mm ² -60 °C ... +80 °C 19.2 ±0.5 mm outer diameter IEC 60332-1 flame-resistant IEC 60754-2 halogen-free DIN 60811-404 oil-resistant NEK 606 mud-resistant Price per metre	252571 ▲	A4	0.472
Cable glands				
	CMP-20PX2K-REX-MsNi-NPT 1/2"OR-SET Cable gland with RapidEx compound explosion-protected for EC-910	275571	A4	0.425

A10



- Standard Ethernet, FO or Power over Ethernet
- Ex e connection box for easy installation
- Modern IP cameras with ONVIF protocol (Profile S) and Full HD
- Day / night - functionality
- Certified acc. to ATEX and IECEx

WebCode **EC940AFZA**



R. STAHL's EC-940-AFZ zoom cameras have an Ex e connection box, making installation in hazardous areas especially easy. At the same time, they can also operate with PoE (Power over Ethernet), PoE++ with extender, fibre optics (Ex opis) or standard Ethernet cables. They are also available as 24 VDC or 230 VAC versions (not for PoE++). They provide clear images even in difficult light - this is ensured by the 32x optical zoom, the WDR image optimisation and the de-fog function, which sharpens contrast in light fog. The cameras are integrated into the surveillance system via the ONVIF protocol (Profile S). These robust surveillance cameras in an electropolished stainless steel enclosure (316L) are suitable for temperatures ranging from -55 °C to +65 °C and certified acc. to ATEX and IECEx for hazardous areas.

A10

	ATEX / IECEx					
Zone	0	1	2	20	21	22
Installation in		•	•		•	•

Selection Table						
Focus	Automatic focus					
Zoom	32x optical					
Resolution	Full HD to 320x180p					
Version	Movable viewing angle					
Viewing angle	62.8° (wide), 2.23° (tele)					
Network protocol	ONVIF profile S					
Product Type	Interfaces	Rated operational voltage AC	Rated operational voltage DC	Art. No.	PS	Weight kg
EC-940-AFZ-HDF-O4I	FX MM (Ex opis)	230 V	-	266893	A1	16.000
EC-940-AFZ-HDF-O5I	FX MM (Ex opis)	-	24 V	266894	A1	16.000
EC-940-AFZ-HDI-O4H	TX	230 V	-	266895	A1	16.000
EC-940-AFZ-HDI-O5H	TX	-	24 V	266897	A1	16.000
EC-940-AFZ-HDI-O6H	PoE++	-	-	266898	A1	16.000

Accessories

Figure	Description	Art. No.	PS	Weight kg
Camera multi-cable armoured				
	VB-CAM-MULTI-Ethernet-ARM 1 x Ethernet cable 3 x power supplies 2.5 mm ² 7 x data cable 0.34 mm ² -60 °C ... +80 °C 19.2 ±0.5 mm outer diameter IEC 60332-1 flame-resistant IEC 60754-2 halogen-free DIN 60811-404 oil-resistant NEK 606 mud-resistant Price per metre	252571 ▲	A4	0.472
Wall mount				
	Wall Bracket EC-940-AFZ Suitable for EC-940-AFZ Material: 316L stainless steel, electropolished Weight: ca. 8 kg Load bearing capacity: max. 40 kg WxH: 200 x 160 x 330 mm	257043	A4	8.000
Pole adapter module				
	Pole adapter module EC-940-AFZ Suitable for EC-940-AFZ Material: 316L stainless steel, electropolished Weight: ca. 4.7 kg Load bearing capacity: max. 40 kg WxH: 214 x 194 mm For pole diameter 88 ... 150 mm May only be used together with wall bracket EC-940-AFZ type 257043	257047	A4	4.700
Corner adapter				
	Corner adapter EC-940-AFZ Suitable for EC-940-AFZ series Material: 316L SST, electropolished Load bearing capacity: max. 40 kg WxHxD: 355 x 150 x 211 mm Weight: ca. 3.2 kg May only be used together with wall bracket EC-940-AFZ type 257043	257048	A4	3.200
Ceiling holder				
	Parapet mounting EC-940-AFZ Suitable for EC-940-AFZ Material: 316L stainless steel, electropolished Weight: ca. 4.5 kg Load bearing capacity: max. 40 kg WxHxD: 200 x 450.5 x 330 mm	257049	A4	4.500
PoE++ Extender				
	PoE++ Extender EC-940-HDI-O6H Cable type: ideally, CAT5e or better Supports Jumbo Frames up to a max. of 9 kB Input voltage: 52 ... 57 V DC Energy consumption: max. 80 W -20 ... +75 °C LxBxH: 126 x 95.3 x 30 mm	256800	A4	0.290

A10



- Certified for hazardous zones 1, 2, 21, 22 acc. to ATEX, IECEx, NEC, CEC, EAC
- Low-Light-Technology for extremely detailed images, even in difficult lighting conditions
- Day / night - functionality
- IP Camera with Full HD for optimum image quality
- Delivery with armoured cable or cable set (NEC / CEC)

WebCode **EC940SAFZIA**



R. STAHL's EC-940S-AFZ zoom cameras are all-round talents for surveillance in hazardous areas because in addition to an excellent panoramic view they also produce very good detailed images. This is the result of the IP camera's high resolution (Full HD with 1920 x 1080), the optical 30x zoom and the brilliant image quality - the WDR function (120 dB) optimises the lighting of very bright or dark areas even in difficult lighting conditions. The built-in wiper and the defog function also ensure a clear view. The IP models are amongst the most modern cameras for hazardous areas and can be integrated into VMS systems worldwide via the ONVIF protocol (Profile S and Q). This surveillance camera is also available as an analogue model that transmits images in real time.

A10

	ATEX / IECEx					
Zone	0	1	2	20	21	22
Installation in		•	•		•	•

	NEC 505 Class I			NEC 506		
Zone	0	1	2	20	21	22
Installation in		•	•		•	•

	NEC 500					
	Class I		Class II		Class III	
Division	1	2	1	2	1	2
Installation in		•		•		

Selection Table						
Focus	Auto, manual, trigger					
Zoom	30x optical					
Resolution	Full HD 1080p 1920x1080 pixel					
Network protocol	ONVIF profile S and Q					
Rated operational voltage AC	24 V					
Rated operational voltage DC	12 – 24 V					
Degree of protection (IP)	IP66 / IP68					
Product Type	Viewing angle	Cable structure	Certifications	Art. No.	PS	Weight kg
EC-940S-AFZ-HFI-W2F-55B	61,6° (wide), 2,5° (tele)	Cable set not armoured	ATEX, IECEx, NEC, CEC, EAC	271548	A3	8.500
EC-940S-AFZ-HFI-W24-56B	61,6° (wide), 2,5° (tele)	armoured cable	ATEX, IECEx, EAC	271547	A3	8.500

Accessories

Figure	Description	Art. No.	PS	Weight kg
Camera multi-cable armoured				
	VB-CAM-MULTI-Ethernet-ARM 1 x Ethernet cable 3 x power supplies 2.5 mm ² 7 x data cable 0.34 mm ² -60 °C ... +80 °C 19.2 ±0.5 mm outer diameter IEC 60332-1 flame-resistant IEC 60754-2 halogen-free DIN 60811-404 oil-resistant NEK 606 mud-resistant Price per metre	252571 ▲	A4	0.472
Ex e Terminal box				
	JCT-8146-Ethernet+Analog 5xcable glands Terminal box, polyester resin Version for ethernet or analog cameras 5 x cable glands: 2 x CMP-25SC2KVAR KLE MsNi M25x1.5 1 x 8161/7-M25-1707 with red stopping plug 2 x 8161/7-M20-1304 with red stopping plug usable for: EC-750, EC-910-AFZ, EC-940S-AFZ (ATEX, IECEx) EC-840S-TIC (ATEX, IECEx), EC-940-PTZ, Water tank	265668	A4	0.800
Wall bracket				
	Wall Bracket EC-x40S Suitable for EC-x40S series Material: 316L stainless steel, electropolished Capacity: max. 40 kg Length: 420 mm	251387	A4	2.000
Pole adapter module				
	Pole adapter module EC-x40S Suitable for EC-x40S For pole diameter 110 ... 150 mm Material: 316L stainless steel, electropolished Capacity: max. 50 kg Weight: 3.3 kg Only together with wall bracket EC-x40S type 251387	251380	A4	3.300
Corner adapter module				
	Corner adapter module EC-x40S Suitable for EC-x40S series Material: 316L stainless steel, electropolished Capacity: max. 50 kg Only together with wall bracket EC-x40S type 251387	251381	A4	2.000
Parapet mounting bracket				
	Parapet mounting bracket EC-x40S Suitable for EC-x40S series Material: 316L stainless steel, electropolished Capacity: max. 70 kg Height: 124 mm Only together with ball joint adapter EC-x40S type 251388	251386	A4	0.900
Ball joint				
	Ball joint x40S 316L stainless steel, electropolished Capacity: max. 40 kg Diameter: 101.6 mm	251388	A4	2.000
Water tank				
	Water tank 10-PV-A 316L stainless-steel enclosure, electropolished Capacity 10 litres Pressure generation by manual pumping or with compressed air Pressure: max 4 bar 24 V AC/DC, max 20 W Temp. range -40 °C to +60 °C (depending on freezing point of liquid used) ATEX certified Zone 1, 2 Suitable for EC-940-PTZ and EC-940S-AFZ	251366	A4	18.000

A10



- Certified for hazardous zones 1, 2, 21, 22 acc. to ATEX, IECEx, NEC, CEC, EAC
- Analogue camera for real-time transmission
- Day / night - functionality
- Delivery with armoured cable or cable set (NEC / CEC)

WebCode **EC940SAFZAA**



R. STAHL's EC-940S-AFZ zoom cameras are all-round talents for surveillance in hazardous areas because in addition to an excellent panoramic view they also produce very good detailed images. This is guaranteed by the high image definition (550 TVL) and the optical 36x zoom of the analogue camera. The camera functions are controlled via RS-485 and PELCO D or Panasonic. The built-in wiper and the optional water tank also ensure a clear view. This analogue surveillance camera series transmits images in real-time, providing users with a non-stop overview in time-critical applications.

	ATEX / IECEx					
Zone	0	1	2	20	21	22
Installation in		•	•		•	•

	NEC 505 Class I			NEC 506		
Zone	0	1	2	20	21	22
Installation in		•	•		•	•

	NEC 500					
	Class I		Class II		Class III	
Division	1	2	1	2	1	2
Installation in		•		•		

A10

Selection Table						
Zoom	36x optical					
Focus	Automatic focus					
Interfaces	RS-485 half duplex					
Viewing angle	57.8° (wide), 1.7° (tele)					
Resolution	550 TVL					
Serial Communication Protocol	Panasonic 850, Pelco D, Macro					
Rated operational voltage AC	24 V					
Rated operational voltage DC	12 – 24 V					
Degree of protection (IP)	IP66, 68,					
Note on degree of protection	IP69 only enclosure					
Product Type	TV system	Cable structure	Certifications	Art. No.	PS	Weight kg
EC-940S-AFZ-3NA-W2F-55	NTSC	Cable set not armoured	ATEX, IECEx, NEC, CEC, EAC	257725	A3	8.000
EC-940S-AFZ-3NA-W24-56	NTSC	armoured cable	ATEX, IECEx, EAC	257724	A3	8.000
EC-940S-AFZ-3PA-W2F-55	PAL	Cable set not armoured	ATEX, IECEx, NEC, CEC, EAC	257723	A3	8.000
EC-940S-AFZ-3PA-W24-56	PAL	armoured cable	ATEX, IECEx, EAC	257722	A3	8.000

Accessories

Figure	Description	Art. No.	PS	Weight kg
Camera multi-cable armoured				
	VB-CAM-MULTI-Analog-ARM 1 x coaxial cable 3 x power supply 2.5 mm ² 7 x data cable 0.34 mm ² -60 °C ... +80 °C 16.5 ±0.3 mm outer diameter IEC 60332-1 flame-resistant IEC 60754-2 halogen-free DIN 60811-404 oil-resistant NEK 606 mud-resistant	252572	A4	0.550
Ex e Terminal box				
	JCT-8146-Ethernet+Analog 5xcable glands Terminal box, polyester resin Version for ethernet or analog cameras 5 x cable glands: 2 x CMP-25SC2KVAR KLE MsNi M25x1.5 1 x 8161/7-M25-1707 with red stopping plug 2 x 8161/7-M20-1304 with red stopping plug usable for: EC-750, EC-910-AFZ, EC-940S-AFZ (ATEX, IECEx) EC-840S-TIC (ATEX, IECEx), EC-940-PTZ, Water tank	265668	A4	0.800
Wall bracket				
	Wall Bracket EC-x40S Suitable for EC-x40S series Material: 316L stainless steel, electropolished Capacity: max. 40 kg Length: 420 mm	251387	A4	2.000
Pole adapter module				
	Pole adapter module EC-x40S Suitable for EC-x40S For pole diameter 110 ... 150 mm Material: 316L stainless steel, electropolished Capacity: max. 50 kg Weight: 3.3 kg Only together with wall bracket EC-x40S type 251387	251380	A4	3.300
Corner adapter module				
	Corner adapter module EC-x40S Suitable for EC-x40S series Material: 316L stainless steel, electropolished Capacity: max. 50 kg Only together with wall bracket EC-x40S type 251387	251381	A4	2.000
Parapet mounting bracket				
	Parapet mounting bracket EC-x40S Suitable for EC-x40S series Material: 316L stainless steel, electropolished Capacity: max. 70 kg Height: 124 mm Only together with ball joint adapter EC-x40S type 251388	251386	A4	0.900
Ball joint				
	Ball joint x40S 316L stainless steel, electropolished Capacity: max. 40 kg Diameter: 101.6 mm	251388	A4	2.000
Water tank				
	Water tank 10-PV-A 316L stainless-steel enclosure, electropolished Capacity 10 litres Pressure generation by manual pumping or with compressed air Pressure: max 4 bar 24 V AC/DC, max 20 W Temp. range -40 °C to +60 °C (depending on freezing point of liquid used) ATEX certified Zone 1, 2 Suitable for EC-940-PTZ and EC-940S-AFZ	251366	A4	18.000

A10

Full HD IP Pan-Tilt-Zoom Camera

Series EC-940-PTZ



- Certified for hazardous zones 1, 2, 21, 22 acc. to ATEX, IECEx, NEC, CEC, EAC
- Low-light technology for particularly detailed images even in difficult light conditions, day / night - functionality
- Enclosure made from electropolished stainless steel (316L), ideal for clean rooms as well as the oil and gas industries
- Extremely precise pan-tilt surveillance camera with Full HD resolution (1920 x 1080)
- Focus on any one point in under 2 seconds Up to 100°/s, extremely exact positioning 0.02°

WebCode **EC940PTZIA**



Use R. STAHL's EC-940-PTZ camera to keep all monitored areas in perfect view and to pan from one object to the next in no time at all - after all, it is the fastest pan-tilt camera for hazardous areas. Its Full HD resolution provides detailed images, and a wiper ensures free view at all times, making this surveillance camera ideal for all-round and detailed surveillance. It can be incorporated into state-of-the-art video systems worldwide, using the ONVIF protocol (Profile S and Q). In addition, it is seawater-proof and degree of protection IP66 means it can be operated in temperatures ranging from -40 °C to +65 °C, for example on drilling rigs, refineries or tankfarms, as well as for monitoring processes in the chemical and pharmaceutical production and in clean rooms.

A10

	ATEX / IECEx					
Zone	0	1	2	20	21	22
Installation in		•	•		•	•

	NEC 505 Class I			NEC 506		
Zone	0	1	2	20	21	22
Installation in		•	•		•	•

	NEC 500					
	Class I		Class II		Class III	
Division	1	2	1	2	1	2
Installation in		•		•		

Selection Table						
Resolution	Full HD 1080p 1920x1080 pixel					
Viewing angle	61,6° (wide), 2,5° (tele)					
Horizontal speed (vari)	0,1°/s ... 100°/s					
Vertical speed (vari)	0,1°/s ... 100°/s					
Accuracy preset position	0.02°					
Focus	Auto, manual, trigger					
Network protocol	ONVIF profile S and Q					
Degree of protection (IP)	IP66					
Product Type	Rated operational voltage AC	Rated operational current AC	Certifications	Art. No.	PS	Weight kg
EC-940-PTZ-HFI-W1B	230 V	0.5 A	ATEX, IECEx, EAC	271521	A3	27.000
EC-940-PTZ-HFI-W2B	24 V	5 A	ATEX, IECEx, NEC, CEC, EAC	271545	A3	27.000
EC-940-PTZ-HFI-W3B	120 V	1.2 A	ATEX, IECEx, EAC	271546	A3	27.000

Accessories

Figure	Description	Art. No.	PS	Weight kg
Camera multi-cable armoured				
	VB-CAM-MULTI-Ethernet-ARM 1 x Ethernet cable 3 x power supplies 2.5 mm ² 7 x data cable 0.34 mm ² -60 °C ... +80 °C 19.2 ±0.5 mm outer diameter IEC 60332-1 flame-resistant IEC 60754-2 halogen-free DIN 60811-404 oil-resistant NEK 606 mud-resistant Price per metre	252571 ▲	A4	0.472
Wall bracket				
	Wall bracket EC-940-PTZ 316L stainless steel, electropolished Capacity: max. 40 kg Length: 400 mm	251364	A4	1.000
Pole mounting				
	Pole adapter module EC-940-PTZ Material: 316L stainless steel, electropolished For pole diameter 110 ... 150 mm Capacity: max. 50 kg Only together with wall bracket EC-940-PTZ type 251364	251362	A4	5.000
Corner adapter module				
	Corner adapter module EC-940-PTZ Material: 316L stainless steel, electropolished Capacity: max. 50 kg WxH: 335 x 186 mm Only together with wall bracket for EC-940-PTZ type 251364	251363	A4	2.000
Parapet mounting bracket				
	Parapet mounting bracket EC-940-PTZ Material: 316L stainless steel, electropolished Capacity: max. 70 kg Diameter: 238 mm	251365	A4	1.000
Water tank				
	Water tank 10-PV-A 316L stainless-steel enclosure, electropolished Capacity 10 litres Pressure generation by manual pumping or with compressed air Pressure: max 4 bar 24 V AC/DC, max 20 W Temp. range -40 °C to +60 °C (depending on freezing point of liquid used) ATEX certified Zone 1, 2 Suitable for EC-940-PTZ and EC-940S-AFZ	251366	A4	18.000
Cable glands				
	CMP-25sPX2K-REX-MsNi-NPT 3/4"-SET Cable gland with RapidEx compound explosion-protected for EC-940-PTZ	275572	A4	0.425

A10



- Certified for hazardous zones 1, 2, 21, 22 acc. to ATEX, IECEx, NEC, CEC, EAC
- Enclosure made from electropolished stainless steel (316L), ideal for clean rooms as well as the oil and gas industries
- Precise, analogue pan-tilt surveillance camera
- Day / night - functionality
- Focus on any one point in under 2 seconds Up to 100°/s. Extremely exact positioning 0.02°.

WebCode **EC940PTZAA**



Use R. STAHL's EC-940-PTZ camera to keep all monitored areas in perfect view and to pan from one object to the next in no time at all - after all, it is one of the fastest pan-tilt camera for hazardous areas. Its high resolution (550 TVL) and 36x zoom provides detailed images, and a wiper ensures free view at all times, making this surveillance camera ideal for all-round and detailed surveillance. The camera functions are controlled via RS-485 and PELCO D, Panasonic, etc. This analogue surveillance camera series transmits images in real-time, providing users with a non-stop overview in time-critical applications. In addition, it is seawater-proof and degree of protection IP66 means it can be operated in temperatures ranging from -40 °C to +65 °C, for example on drilling rigs, refineries or tankfarms, as well as for monitoring processes in the chemical and pharmaceutical production and in clean rooms.

A10

	ATEX / IECEx					
Zone	0	1	2	20	21	22
Installation in		•	•		•	•

	NEC 505 Class I			NEC 506		
Zone	0	1	2	20	21	22
Installation in		•	•		•	•

	NEC 500					
	Class I		Class II		Class III	
Division	1	2	1	2	1	2
Installation in		•		•		

Selection Table							
Resolution	550 TVL						
Viewing angle	57.8° (wide), 1.7° (tele)						
Horizontal speed (vari)	0,1°/s ... 100°/s						
Vertical speed (vari)	0,1°/s ... 100°/s						
Accuracy preset position	0.02°						
Focus	Automatic focus						
Interfaces	RS-485 half duplex						
Serial Communication Protocol	American Dynamics, Ernitec, Panasonic, Pelco D						
Degree of protection (IP)	IP66						
Product Type	TV system	Rated operational voltage AC	Rated operational current AC	Certifications	Art. No.	PS	Weight kg
EC-940-PTZ-A3N-W20	NTSC	24 V	5 A	ATEX, IECEx, NEC, CEC, EAC	257726	A3	27.000
EC-940-PTZ-A3P-W10	PAL	230 V	0.5 A	ATEX, IECEx, EAC	257727	A3	27.000
EC-940-PTZ-A3P-W20	PAL	24 V	5 A	ATEX, IECEx, NEC, CEC, EAC	257728	A3	27.000

Accessories

Figure	Description	Art. No.	PS	Weight kg
Camera multi-cable armoured				
	VB-CAM-MULTI-Analog-ARM 1 x coaxial cable 3 x power supply 2.5 mm ² 7 x data cable 0.34 mm ² -60 °C ... +80 °C 16.5 ±0.3 mm outer diameter IEC 60332-1 flame-resistant IEC 60754-2 halogen-free DIN 60811-404 oil-resistant NEK 606 mud-resistant	252572	A4	0.550
Wall bracket				
	Wall bracket EC-940-PTZ 316L stainless steel, electropolished Capacity: max. 40 kg Length: 400 mm	251364	A4	1.000
Pole mounting				
	Pole adapter module EC-940-PTZ Material: 316L stainless steel, electropolished For pole diameter 110 ... 150 mm Capacity: max. 50 kg Only together with wall bracket EC-940-PTZ type 251364	251362	A4	5.000
Corner adapter module				
	Corner adapter module EC-940-PTZ Material: 316L stainless steel, electropolished Capacity: max. 50 kg WxH: 335 x 186 mm Only together with wall bracket for EC-940-PTZ type 251364	251363	A4	2.000
Parapet mounting bracket				
	Parapet mounting bracket EC-940-PTZ Material: 316L stainless steel, electropolished Capacity: max. 70 kg Diameter: 238 mm	251365	A4	1.000
Water tank				
	Water tank 10-PV-A 316L stainless-steel enclosure, electropolished Capacity 10 litres Pressure generation by manual pumping or with compressed air Pressure: max 4 bar 24 V AC/DC, max 20 W Temp. range -40 °C to +60 °C (depending on freezing point of liquid used) ATEX certified Zone 1, 2 Suitable for EC-940-PTZ and EC-940S-AFZ	251366	A4	18.000
Cable glands				
	CMP-25sPX2K-REX-MSNi-NPT 3/4"-SET Cable gland with RapidEx compound explosion-protected for EC-940-PTZ	275572	A4	0.425

A10



- IP Dome camera with 360° pan function
- Certified for hazardous zones 1, 2, 21, 22 acc. to ATEX and IECEx
- Day / night - functionality
- Surveillance camera enclosure made of stainless steel (316L), IP68, with hood

WebCode **EC750IA**



ONVIF

With its pan-tilt head, R. STAHL's EC-750 dome camera keeps hazardous areas in full view over 360° from above. The powerful zoom provides clear images for reliable security surveillance, including close-ups, of complete plant sections. The stainless steel enclosure (316L) with degree of protection IP68 is dustproof, submersible and suitable for installation in rough ambient conditions, and its hood, included in the delivery, makes the camera even seawater-proof. Two zoom versions are available for the Dome IP camera: 18x and 40x optical zoom. From this range a suitable dome camera can be found for every surveillance system.

	ATEX / IECEx					
	0	1	2	20	21	22
Zone						
Installation in		•	•		•	•

A10

Selection Table						
Network protocol	ONVIF profile S					
Slewing range	360°					
Horizontal speed (vari)	0°/s ... 42°/s					
Vertical speed (vari)	0°/s ... 42°/s					
Rated operational voltage DC	24 V					
Degree of protection (IP)	IP68, 5bar					
Product Type	Connection	Viewing angle	Zoom	Art. No.	PS	Weight kg
EC-750-PA-IP-PE	Ethernet port LAN 10/100 T	48° (wide), 2.8° (tele)	18x optical	168168 ▲	A3	8.000
EC-750-PA-IP-PE-40	Ethernet port LAN 10/100 T	60° (wide), 1.6° (tele)	40x optical	241491	A3	8.000



- Analogue Dome camera with 360° pan function
- Certified for hazardous zones 1, 2, 21, 22 acc. to ATEX and IECEx
- Day / night - functionality
- Surveillance camera enclosure made of stainless steel (316L), IP68, with hood

WebCode **EC750AA**


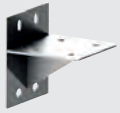



With its pan-tilt head, R. STAHL's EC-750 dome camera keeps hazardous areas in full view over 360° from above. The powerful zoom provides clear images for reliable security surveillance, including close-ups, of complete plant sections. The stainless steel enclosure (316L) with degree of protection IP68 is dustproof, submersible and suitable for installation in rough ambient conditions, and its hood, included in the delivery, makes the camera even seawater-proof. The analogue camera model transmits the video data in real time in PAL or NTSC format. The EC-750 Dome camera is also available as an IP version.

A10

	ATEX / IECEx					
Zone	0	1	2	20	21	22
Installation in		•	•		•	•

Selection Table						
Serial Communication Protocol	Pelco D					
Zoom	18x optical					
Slewing range	360°					
Horizontal speed (vari)	0°/s ... 42°/s					
Vertical speed (vari)	0°/s ... 42°/s					
Rated operational voltage DC	24 V					
Degree of protection (IP)	IP68, 5bar					
Product Type	TV system	Total pixels	Pixel	Art. No.	PS	Weight kg
EC-750-PA-VI-PE	PAL	752 (H) x 582 (V)	440000	168166 ▲	A3	8.000

Accessories				
Figure	Description	Art. No.	PS	Weight kg
Ex-e terminal box				
	<p>JCT-8118-122-14p-02</p> <ul style="list-style-type: none"> - II 2 G Ex eb IIC T6/T5 Gb - II 2 D Ex tb IIIC T80 °C ... T95 °C - 14 UT-2.5 terminals - 2 UT-2.5 PE terminals - 4 cable connectors - Degree of protection IP66, water-proof - Polyester resin, black 	230600 ▲	A4	1.000
	<p>JCT-8118-122-14p-02-ARM</p> <ul style="list-style-type: none"> - ATEX-certification zone 1, 2, 21 & 22 - II 2 G Ex eb mb IIC T6/T5/T4 Gb - II 2 D Ex tb IIC T80 °C / T95 °C / T130 °C - Degree of protection IP66 - Polyester material, black - 14 UT-2.5 terminals - 2 UT-2.5 PE terminals - HxWxD: 115 x 115 x 64 mm 	230603 ▲	A4	1.000
Camera multi-cable armoured				
	<p>VB-CAM-MULTI-01-ARM</p> <ul style="list-style-type: none"> 1 x coaxial cable 2 x power supplies 3 x data cables -40 °C ... +85 °C Mud and oil-resistant Suitable for EC-710 and EC-750 (analogue only) Price per meter 	167535 ▲	A4	0.120
Mounting versions				
	<p>wall bracket for EC-750</p> <ul style="list-style-type: none"> Wall bracket (without camera) For EC-750 series Material: V2A stainless steel HxWxD: 115x100x103 mm 	230638	A4	1.000
	<p>Pole bracket EC-750</p> <ul style="list-style-type: none"> Pole bracket (without camera) Suitable for EC-750 series Material: V2A stainless steel HxWxD: 204x120x432 mm Diameter 108 mm 	230670	A4	2.000

A10



- High-resolution IP thermal imaging camera
- Certified for hazardous zones 1, 2, 21, 22 acc. to ATEX, IECEx, NEC, CEC, EAC
- Day / night - functionality
- Enclosure made from electropolished stainless steel (316L), ideal for clean rooms as well as the oil and gas industries
- Delivery with armoured cable or cable set (NEC / CEC)

WebCode **EC840STICIA**



R. STAHL's EC-840S-TIC-19I IP thermal imaging camera is one of the most modern explosion-protected cameras currently on the market. Its integrated thermography function ensures clear and safe recognition of changes in temperature by colour coding specific temperature zones - according to your settings, precisely tailored to the process under surveillance. This range of versions includes a suitable model for every surveillance system: The IP cameras support the ONVIF protocol (profile S) for network integration worldwide. All models are available with either high or medium resolution. These surveillance cameras are certified acc. to ATEX, IECEx, NEC, CEC and EAC for hazardous zones 1, 2, 21 and 22 and are therefore suitable for installation in many regions.

A10

	ATEX / IECEx					
Zone	0	1	2	20	21	22
Installation in		•	•		•	•

	NEC 505 Class I			NEC 506		
Zone	0	1	2	20	21	22
Installation in		•	•		•	•

	NEC 500					
	Class I		Class II		Class III	
Division	1	2	1	2	1	2
Installation in		•		•		

Selection Table							
Resolution	< 50 mK to f/1.0						
Network protocol	ONVIF profile S						
Rated operational voltage AC	24 V						
Rated operational voltage DC	12 – 24 V						
Degree of protection (IP)	IP66, 68,						
Note on degree of protection	IP69 only enclosure						
Product Type	Viewing angle	Person (detect/recog/ident)	Total pixels	Certifications	Art. No.	PS	Weight kg
EC-840S-TIC-19I-642-456	32° fixed	570 m / 144 m / 72 m	640 (H) x 512 (V)	ATEX, IECEx, EAC	251330	A3	8.000
EC-840S-TIC-19I-642-F55	32° fixed	570 m / 144 m / 72 m	640 (H) x 512 (V)	ATEX, IECEx, NEC, CEC, EAC	252762	A3	8.000
EC-840S-TIC-19I-332-456	17° fixed	640 m / 180 m / 80 m	336 (H) x 256 (V)	ATEX, IECEx, EAC	251328	A3	8.000
EC-840S-TIC-19I-332-F55	17° fixed	640 m / 180 m / 80 m	336 (H) x 256 (V)	ATEX, IECEx, NEC, CEC, EAC	252761	A3	8.000

Accessories				
Figure	Description	Art. No.	PS	Weight kg
Camera multi-cable armoured				
	VB-CAM-MULTI-Ethernet-ARM 1 x Ethernet cable 3 x power supplies 2.5 mm ² 7 x data cable 0.34 mm ² -60 °C ... +80 °C 19.2 ±0.5 mm outer diameter IEC 60332-1 flame-resistant IEC 60754-2 halogen-free DIN 60811-404 oil-resistant NEK 606 mud-resistant Price per metre	252571 ▲	A4	0.472
Ex e Terminal box				
	JCT-8146-Ethernet+Analog 5xcable glands Terminal box, polyester resin Version for ethernet or analog cameras 5 x cable glands: 2 x CMP-25SC2KVAR KLE MsNi M25x1.5 1 x 8161/7-M25-1707 with red stopping plug 2 x 8161/7-M20-1304 with red stopping plug usable for: EC-750, EC-910-AFZ, EC-940S-AFZ (ATEX, IECEx) EC-840S-TIC (ATEX, IECEx), EC-940-PTZ, Water tank	265668	A4	0.800
Wall bracket				
	Wall Bracket EC-x40S Suitable for EC-x40S series Material: 316L stainless steel, electropolished Capacity: max. 40 kg Length: 420 mm	251387	A4	2.000
Pole adapter module				
	Pole adapter module EC-x40S Suitable for EC-x40S For pole diameter 110 ... 150 mm Material: 316L stainless steel, electropolished Capacity: max. 50 kg Weight: 3.3 kg Only together with wall bracket EC-x40S type 251387	251380	A4	3.300
Corner adapter module				
	Corner adapter module EC-x40S Suitable for EC-x40S series Material: 316L stainless steel, electropolished Capacity: max. 50 kg Only together with wall bracket EC-x40S type 251387	251381	A4	2.000
Parapet mounting bracket				
	Parapet mounting bracket EC-x40S Suitable for EC-x40S series Material: 316L stainless steel, electropolished Capacity: max. 70 kg Height: 124 mm Only together with ball joint adapter EC-x40S type 251388	251386	A4	0.900
Ball joint				
	Ball joint x40S 316L stainless steel, electropolished Capacity: max. 40 kg Diameter: 101.6 mm	251388	A4	2.000

A10



- High-resolution analogue thermal imaging camera
- Certified for hazardous zones 1, 2, 21, 22 acc. to ATEX, IECEx, NEC, CEC, EAC
- Day / night - functionality
- Enclosure made from electropolished stainless steel (316L), ideal for clean rooms as well as the oil and gas industries
- Delivery with armoured cable or cable set (NEC / CEC)

WebCode **EC840STICAA**



R. STAHL's EC-840S-TIC-19A analogue thermal imaging camera is one of the most modern explosion-protected cameras currently on the market. Its integrated thermography function ensures clear and safe recognition of changes in temperature by colour coding specific temperature zones - according to your settings, precisely tailored to the process under surveillance. The analogue camera functions are controlled via RS-485 with Pelco D or Panasonic protocol. All models are available with high or medium resolution. These surveillance cameras are certified acc. to ATEX, IECEx, NEC, CEC and EAC for hazardous zones 1, 2, 21 and 22 and are therefore suitable for installation in many regions.

A10

	ATEX / IECEx					
Zone	0	1	2	20	21	22
Installation in		•	•		•	•

	NEC 505 Class I			NEC 506		
Zone	0	1	2	20	21	22
Installation in		•	•		•	•

	NEC 500					
	Class I		Class II		Class III	
Division	1	2	1	2	1	2
Installation in		•		•		

Selection Table							
Interfaces	RS-485 half duplex						
Resolution	< 50 mK to f/1.0						
Serial Communication Protocol	Panasonic, Pelco D, Macro						
Frame rate (fps)	8.3 PAL, 7.5 NTSC						
Rated operational voltage AC	24 V						
Rated operational voltage DC	12 – 24 V						
Degree of protection (IP)	IP66, 68,						
Note on degree of protection	IP69 only enclosure						
Product Type	Viewing angle	Total pixels	Person (detect/recog/ident)	Certifications	Art. No.	PS	Weight kg
EC-840S-TIC-19A-642-456	32° fixed	640 (H) x 512 (V)	570 m / 144 m / 72 m	ATEX, IECEx, EAC	251329	A3	8.000
EC-840S-TIC-19A-642-F55	32° fixed	640 (H) x 512 (V)	570 m / 144 m / 72 m	ATEX, IECEx, NEC, CEC, EAC	252710	A3	8.000
EC-840S-TIC-19A-332-456	17° fixed	336 (H) x 256 (V)	640 m / 180 m / 80 m	ATEX, IECEx, EAC	251327	A3	8.000
EC-840S-TIC-19A-332-F55	17° fixed	336 (H) x 256 (V)	640 m / 180 m / 80 m	ATEX, IECEx, NEC, CEC, EAC	252709	A3	8.000

Accessories				
Figure	Description	Art. No.	PS	Weight kg
Camera multi-cable armoured				
	VB-CAM-MULTI-Analog-ARM 1 x coaxial cable 3 x power supply 2.5 mm ² 7 x data cable 0.34 mm ² -60 °C ... +80 °C 16.5 ±0.3 mm outer diameter IEC 60332-1 flame-resistant IEC 60754-2 halogen-free DIN 60811-404 oil-resistant NEK 606 mud-resistant	252572	A4	0.550
Ex e Terminal box				
	JCT-8146-Ethernet+Analog 5xcable glands Terminal box, polyester resin Version for ethernet or analog cameras 5 x cable glands: 2 x CMP-25SC2KVAR KLE MsNi M25x1.5 1 x 8161/7-M25-1707 with red stopping plug 2 x 8161/7-M20-1304 with red stopping plug usable for: EC-750, EC-910-AFZ, EC-940S-AFZ (ATEX, IECEX) EC-840S-TIC (ATEX, IECEX), EC-940-PTZ, Water tank	265668	A4	0.800
Wall bracket				
	Wall Bracket EC-x40S Suitable for EC-x40S series Material: 316L stainless steel, electropolished Capacity: max. 40 kg Length: 420 mm	251387	A4	2.000
Pole adapter module				
	Pole adapter module EC-x40S Suitable for EC-x40S For pole diameter 110 ... 150 mm Material: 316L stainless steel, electropolished Capacity: max. 50 kg Weight: 3.3 kg Only together with wall bracket EC-x40S type 251387	251380	A4	3.300
Corner adapter module				
	Corner adapter module EC-x40S Suitable for EC-x40S series Material: 316L stainless steel, electropolished Capacity: max. 50 kg Only together with wall bracket EC-x40S type 251387	251381	A4	2.000
Parapet mounting bracket				
	Parapet mounting bracket EC-x40S Suitable for EC-x40S series Material: 316L stainless steel, electropolished Capacity: max. 70 kg Height: 124 mm Only together with ball joint adapter EC-x40S type 251388	251386	A4	0.900
Ball joint				
	Ball joint x40S 316L stainless steel, electropolished Capacity: max. 40 kg Diameter: 101.6 mm	251388	A4	2.000

A10



- Universally applicable Full HD IP camera with low-light technology, day / night - functionality
- Crystal-clear images in all safe, industrial areas
- Ensuring optimum control options with clearly visible people and processes
- Plug & play installation
- Power over Ethernet operation (PoE+)

WebCode **IC930AFZA**



As a universally applicable Full HD IP camera with low-light technology, the IC-930 provides crystal-clear images in all safe, industrial areas - from food factories and pharmaceutical or chemical factories to ships and piers. The enclosure consists of AISI316L stainless steel.

The high degree of light sensitivity and the camera's day / night mode ensure brilliant images even in bad, low light. This ensures optimum control options with clearly visible people and processes.

Even the 30x zoom still provides optimum images and video streams with a frame rate of 60 images per second.

The camera can be operated in temperatures ranging from -40 °C to +65 °C and has IP66 / IP67 / IP68 as well as IP69. As a standard, the camera is supplied with supports for wall, ceiling and parapet mounting and with a sunshield. Another version is available with a wiper and an optional water tank.

A10

Selection Table

Focus	Auto, manual, trigger			
Zoom	30x optical			
Viewing angle	61,6° (wide), 2,5° (tele)			
Network protocol	ONVIF profile S and Q			
Interfaces	PoE+ (IEEE802.3at)			
Product Type	Integrated wiper	Art. No.	PS	Weight kg
IC-930-AFZ-I30P00S2C10V2W00M00	No	271549	A3	4.000
IC-930-AFZ-I30P00S2C10V2W01M00	Yes	271550	A3	4.000



- Camera operation in zone 1 by means of ISview / HMI installation
- Installation on oil and gas rigs (inland, onshore and offshore)
- Ideal for camera systems involving up to 12 cameras
- Simple operation, no extra training required
- Very short timeouts
- Optimised for Open HMI touch screen operation
- Large touch buttons for operation with work gloves

WebCode **ISviewA**

Video software for the display of video streams supplied by IP cameras with video servers with VAPIX protocol.

Selection Table				
Version	Video software			
Description	Art. No.	PS	Weight kg	
Installation USB stick without license, one license for each camera necessary	213019	A1	0.100	

A10

Accessories				
Figure	Description	Art. No.	PS	Weight kg
Videolicense for ISview				
	<p>ISview-1.xx-L Videosoftware license ISview version 1.xx License for one camera with direct presentation at PC systems Delivery of license lable at CD/DVD cover</p>	213018	A1	0.100



- Up to 50 cameras (S50X version)
- 1 server (S50X version)
- Live / archive mode
- Mobile Client
- Site plans
- Additional packets available: S100 and Infinity


WebCode CayugaA

Qognify Cayuga is available as three basic packages, S50X, S100 and Infinity - meeting the different requirements of different project sizes. All products are based on the same technical platform. Upgrades are therefore easily achieved by importing a new license key. The camera channels are licensed separately.

Selection Table

Version	Video software	Art. No.	PS	Weight kg
Description				
Qognify Cayuga S50X video management software		239083	A7	0.100

Accessories

Figure	Description	Art. No.	PS	Weight kg
Video license for Qognify				
	Qognify Cayuga S50 X Camera Channel Qognify Cayuga S50X camera license, required for each camera	239084	A7	0.100

A10



A10